



# My<sup>resi</sup> Upton Square

**Shared ownership plans**

Final phase

**My home, my everything**



# My<sup>resi</sup> Upton Square

**A contemporary collection of 1, 2, 3 and 4 bedroom homes between Northampton's historic centre and beautiful new country park. Our beautifully designed new homes give you the freedom to live life the way you want to.**

## **Shared ownership**

Within this exclusive development we are able to offer a selection of homes through SO Resi – shared ownership that makes home ownership possible for more people. With SO Resi you can buy a share of your home, with a lower deposit, smaller mortgage and monthly payment on the rest. It's clear and uncomplicated, before and after you buy.

## **My home, my everything**

**By Metropolitan Thames Valley**

# My<sup>resi</sup> Upton Square

CGI of homes at My Resi Upton Square is for illustrative purposes only and subject to change.

# Development overview

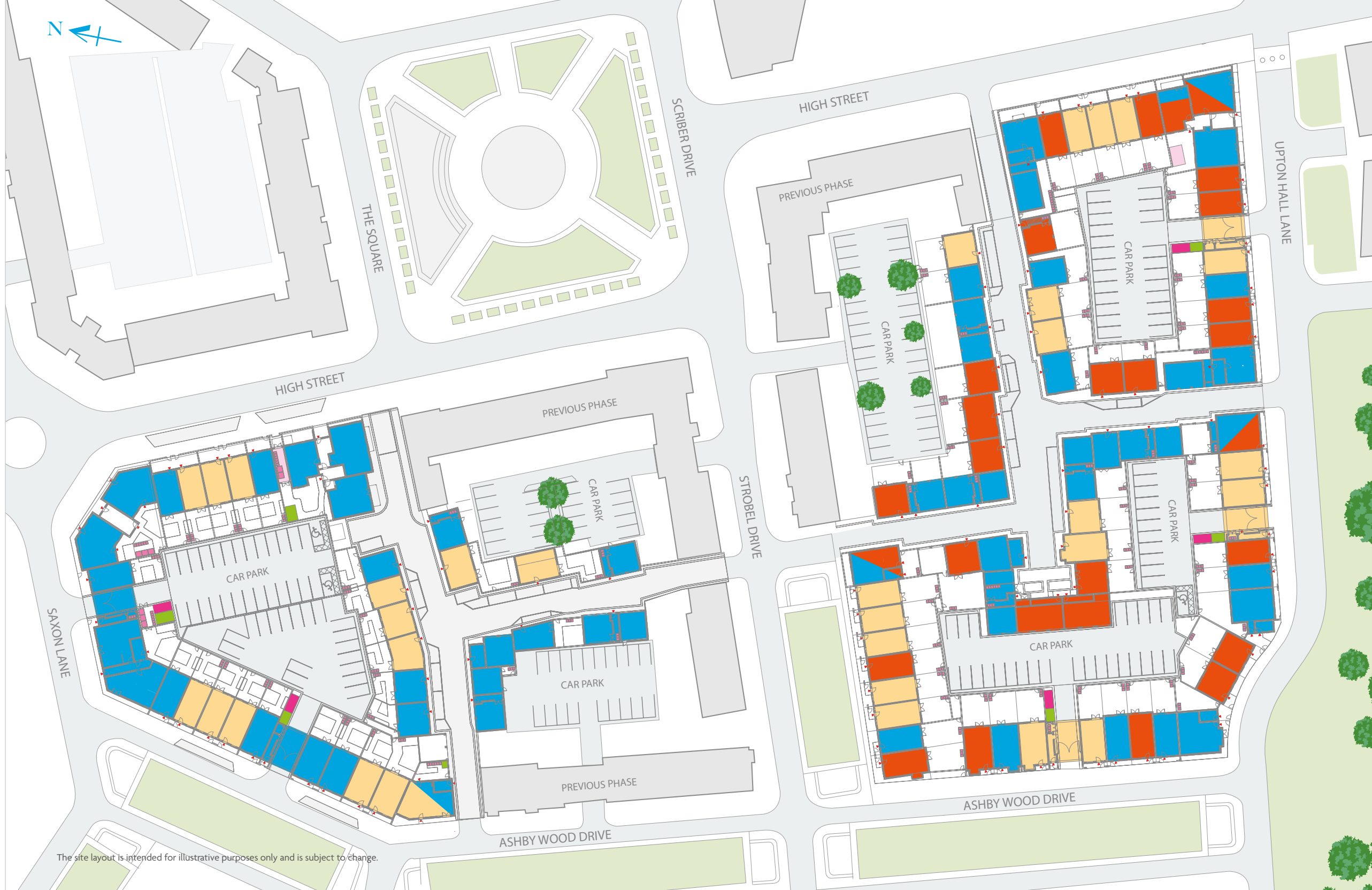
This exciting collection of homes is part of a popular established development just outside Northampton's historic centre. Designed for ease of living, My Resi Upton Square offers spacious interiors, beautiful shared outdoor space and on-site parking. A bus stop is located right next to the development providing a 22 minute regular service to Northampton and its amenities.



My Resi Upton Square  
Scribers Dr, Upton,  
Northampton NN5 4EZ

## KEY

- Private sale
- Shared ownership
- Affordable rent
- Communal cycle store
- Bin collection point
- Bin storage area
- Communal bin store



The site layout is intended for illustrative purposes only and is subject to change.

## Specification

### General

Gardens to houses

Balconies to selected homes

Natural oak effect vinyl flooring by Amtico in kitchen, living room and dining room, bathrooms and en-suites

Extra heavy duty carpet in bedrooms, stairs and landings (Basalt Sensation by Cormar Carpets)

LED warm white down lights to kitchen and bathrooms. Pedant lights to hall and landing areas

Dimmable light switch to living rooms and bedrooms

En-suite bathrooms to selected homes

### Kitchen

Fully fitted Symphony kitchens

Brilliant gloss white soft close doors with chrome finished handles

Laminate square edged worktops

One and a half bowl stainless steel sink with drainer tops

Zanussi built in steel fan oven

Zanussi gas hob in stainless steel (for houses)

Zanussi black ceramic hob (for flats)

Zanussi chimney cooker hood - stainless steel

A rated Zanussi washing machine for houses, integrated washer / dryer for apartments

Stainless steel splash-back to hob

A+ rated low frost built-in fridge freezer

A rated Zanussi integrated dishwasher

### Bathrooms and ensembles

Contemporary bathroom suite with white sanitary ware

Shaver point within main bathroom (or in en-suite where applicable)

Full room height tiling to shower enclosure

Chrome towel radiator

Clear glass frameless hinged square bath screen

Ceramic wall tiles (Shine Niquel by Porcelanosa)

Specifications stated in this brochure are for guidance only. These particulars do not constitute any part of an offer or contract and are subject to change.

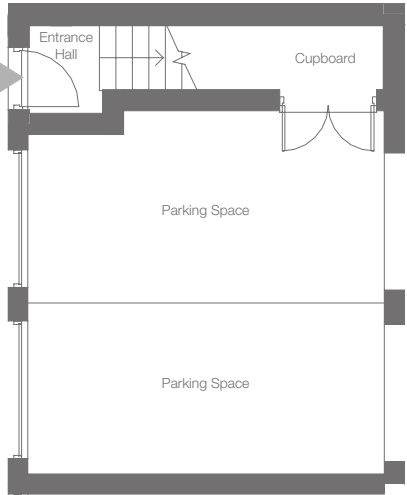


Images for illustrative purposes only

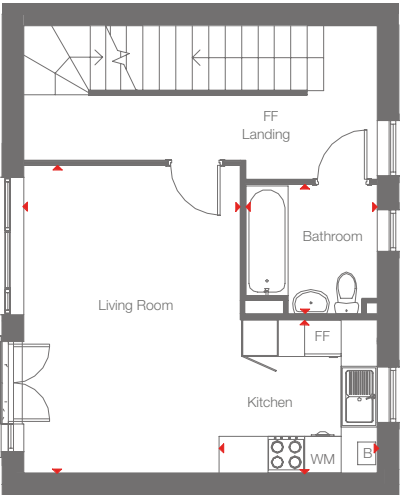


1 bedroom duplex apartment

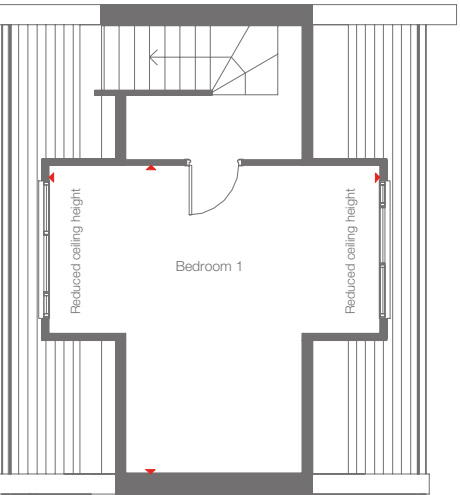
Plot 194



Ground floor



First floor



Second floor

Room schedule		
Living	6.2 x 3.6m	20'5" x 11'9"
Kitchen	2.2 x 2.6m	4'4" x 8'4"
Bedroom 1	5.1 x 5.4m	16'8" x 17'10"
Bathroom	2.2 x 2.1m	7'2" x 6'11"
Total area	72 sq m	778 sq ft

Note: Kitchen layouts may vary slightly from layout plan.

Key

DW

Dishwasher

FF

Fridge/freezer

WM

Washing machine

B

Boiler

LH

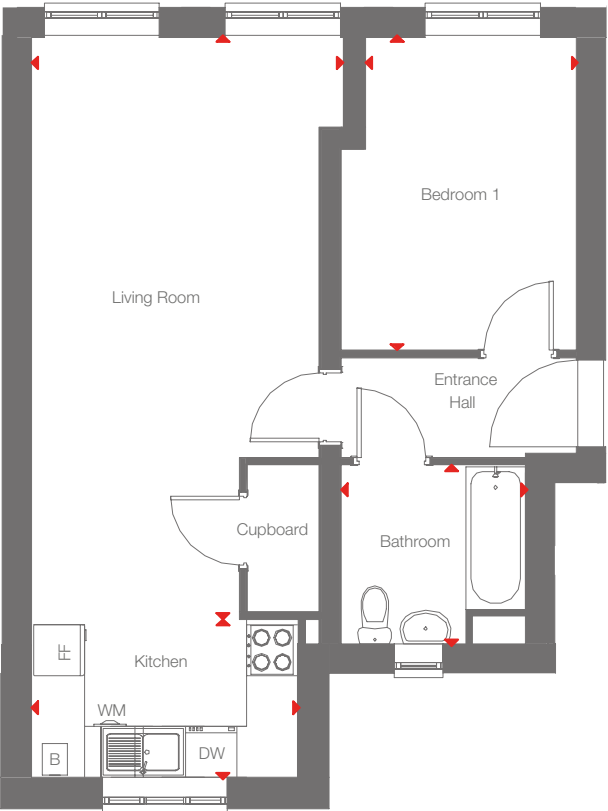
Loft hatch



All floor plans in this brochure are for general guidance only. All room dimensions are subject to a plus/minus 5% tolerance. Measures are from plans and “as built”, represent the largest cross section of each room and may vary and. Size of balconies vary between apartments of the same type. Any dimensions shown are not intended to be used for carpet sizes, appliances, spaces or items of furniture. These particulars do not constitute any part of an offer or contract with regard to the specifications.

1 bedroom apartment

Plot 230 Ground Floor



Room schedule		
Living / Dining	6.9 x 3.7m	22'7" x 12'1"
Kitchen	3.2 x 1.9m	10'4" x 6'2"
Bedroom 1	3.7 x 2.5m	12'2" x 8'3"
Bathroom	2.2 x 2.1m	7'2" x 7'
Total area	50 sq m	538 sq ft

Note: Kitchen layouts may vary slightly from layout plan.

Key

DW

Dishwasher

FF

Fridge/freezer

WM

Washing machine

B

Boiler

LH

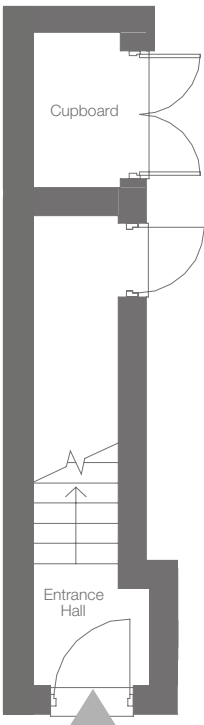
Loft hatch



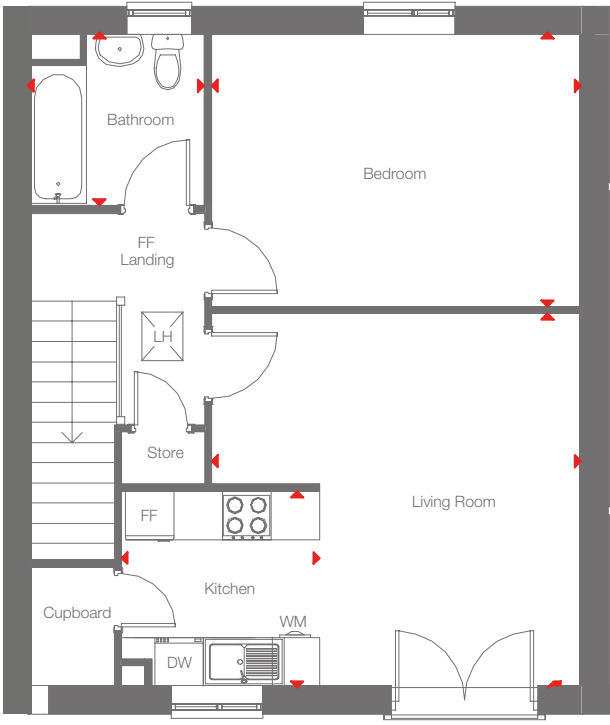
All floor plans in this brochure are for general guidance only. All room dimensions are subject to a plus/minus 5% tolerance. Measures are from plans and “as built”, represent the largest cross section of each room and may vary and. Size of balconies vary between apartments of the same type. Any dimensions shown are not intended to be used for carpet sizes, appliances, spaces or items of furniture. These particulars do not constitute any part of an offer or contract with regard to the specifications.

1 bedroom apartment

Plot 207 First Floor



Ground floor



First floor

Room schedule		
Living	4.6 x 4.6m	15'2" x 15'
Kitchen	2.5 x 2.4m	8'1" x 8'
Bedroom 1	4.6 x 3.4m	15' x 11'2"
Bathroom	2.2 x 2.1m	7'2" x 7'
Total area	55 sq m	598 sq ft



Note: Kitchen layouts may vary slightly from layout plan.

**Key**

DW

Dishwasher

FF

Fridge/freezer

WM

Washing machine

B

Boiler

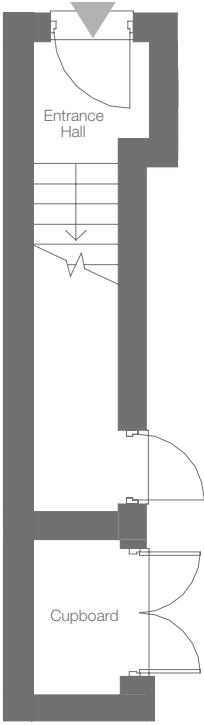
LH

Loft hatch

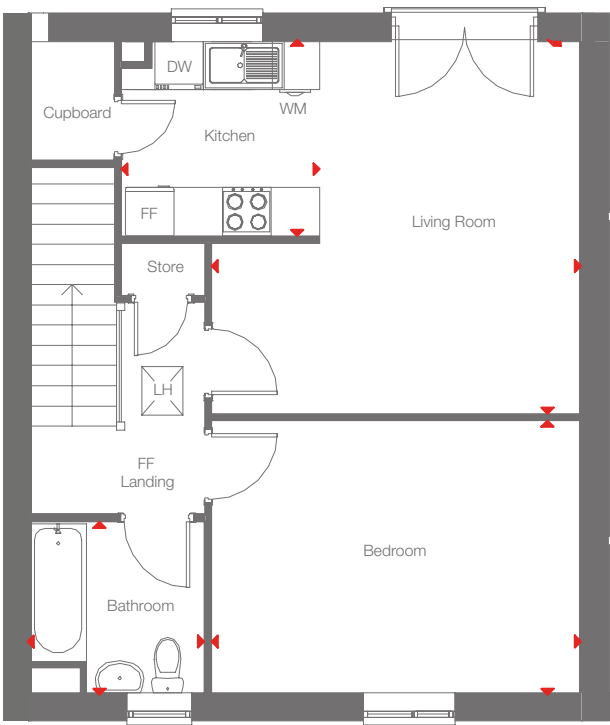
All floor plans in this brochure are for general guidance only. All room dimensions are subject to a plus/minus 5% tolerance. Measures are from plans and "as built", represent the largest cross section of each room and may vary and. Size of balconies vary between apartments of the same type. Any dimensions shown are not intended to be used for carpet sizes, appliances, spaces or items of furniture. These particulars do not constitute any part of an offer or contract with regard to the specifications.

1 bedroom apartment

Plot 217 First Floor



Ground floor



First floor

Room schedule		
Living	4.6 x 4.6m	15'2" x 15'
Kitchen	2.5 x 2.4m	8'1" x 8'
Bedroom 1	4.6 x 3.4m	15' x 11'2"
Bathroom	2.2 x 2.1m	7'2" x 7'
Total area	55 sq m	598 sq ft



Note: Kitchen layouts may vary slightly from layout plan.

**Key**

DW

Dishwasher

FF

Fridge/freezer

WM

Washing machine

B

Boiler

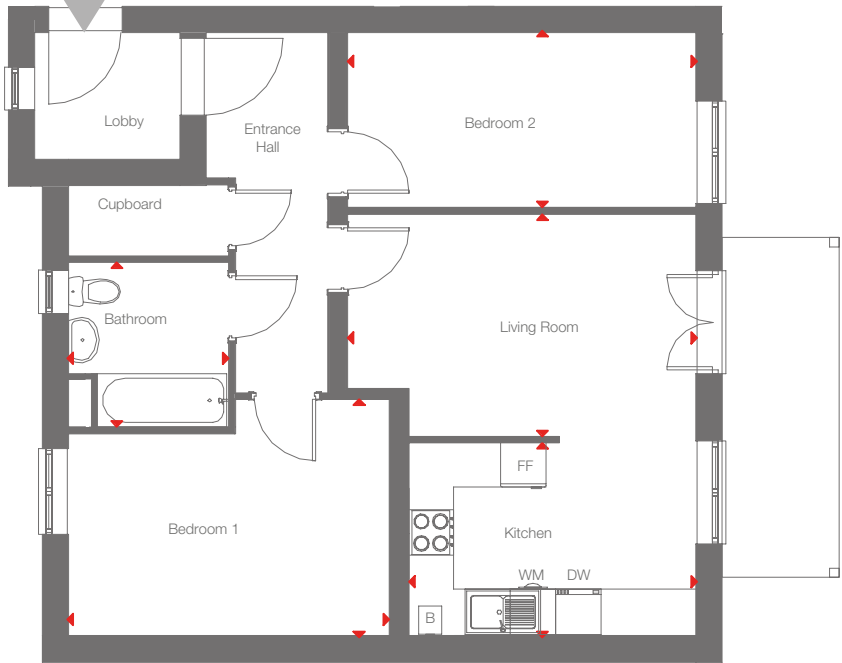
LH

Loft hatch

All floor plans in this brochure are for general guidance only. All room dimensions are subject to a plus/minus 5% tolerance. Measures are from plans and "as built", represent the largest cross section of each room and may vary and. Size of balconies vary between apartments of the same type. Any dimensions shown are not intended to be used for carpet sizes, appliances, spaces or items of furniture. These particulars do not constitute any part of an offer or contract with regard to the specifications.

2 bedroom apartment

Plot 236 Ground Floor  
Plot 237 First Floor  
Plot 238 Second Floor



Room schedule		
Living / Dining	5.1 x 3.3m	16'9" x 10'9"
Kitchen	5.4 x 2.5m	17'7" x 8'4"
Bedroom 1	3.6 x 3.1m	11'10" x 10'3"
Bedroom 2	3.6 x 2.2m	11'10" x 7'2"
Bathroom	2.2 x 2.1m	7'2" x 7'
Total area	72 sq m	775 sq ft

Note: Kitchen layouts may vary slightly from layout plan.

**Key**

DW

Dishwasher

FF

Fridge/freezer

WM

Washing machine

B

Boiler

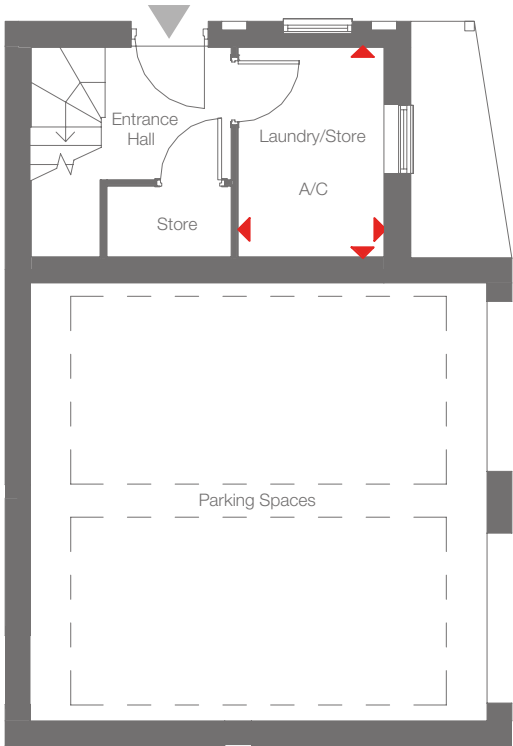
LH

Loft hatch

All floor plans in this brochure are for general guidance only. All room dimensions are subject to a plus/minus 5% tolerance. Measures are from plans and "as built", represent the largest cross section of each room and may vary and. Size of balconies vary between apartments of the same type. Any dimensions shown are not intended to be used for carpet sizes, appliances, spaces or items of furniture. These particulars do not constitute any part of an offer or contract with regard to the specifications.

2 bedroom apartment

Plot 191



Ground floor

Room schedule		
Living / Dining	4.5 x 3.9m	14'10" x 12'9"
Kitchen	3 x 2.2m	9'10" x 7'3"
Bedroom 1	3.4 x 3.1m	11'3" x 10'3"
Bedroom 2	3.1 x 2.6m	10'4" x 8'7"
Bathroom	2.2 x 2.1m	7'1" x 7'
Total area	718 sq m	764 sq ft

Note: Kitchen layouts may vary slightly from layout plan.

**Key**

DW

Dishwasher

FF

Fridge/freezer

WM

Washing machine

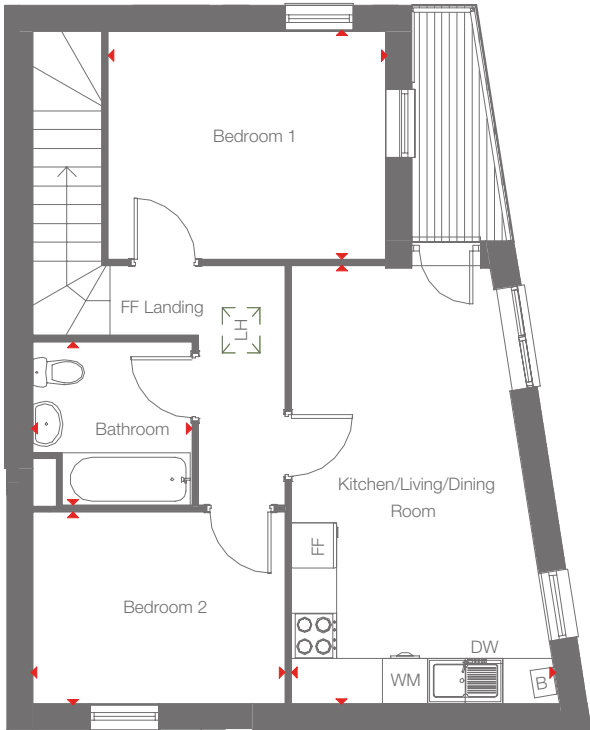
B

Boiler

LH

Loft hatch

All floor plans in this brochure are for general guidance only. All room dimensions are subject to a plus/minus 5% tolerance. Measures are from plans and "as built", represent the largest cross section of each room and may vary and. Size of balconies vary between apartments of the same type. Any dimensions shown are not intended to be used for carpet sizes, appliances, spaces or items of furniture. These particulars do not constitute any part of an offer or contract with regard to the specifications.

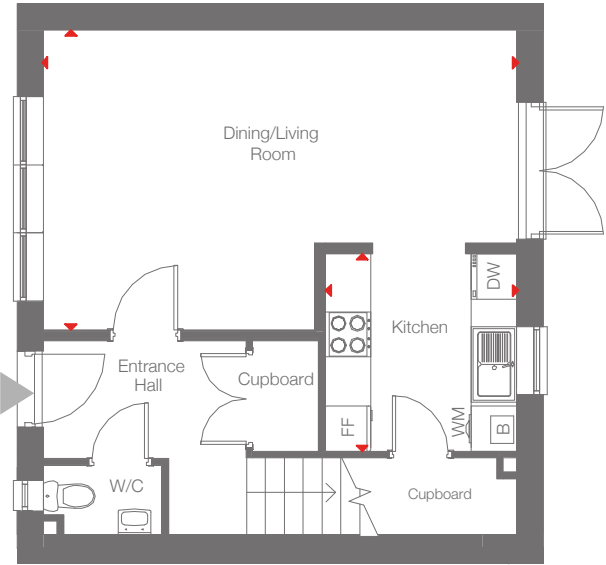


First floor

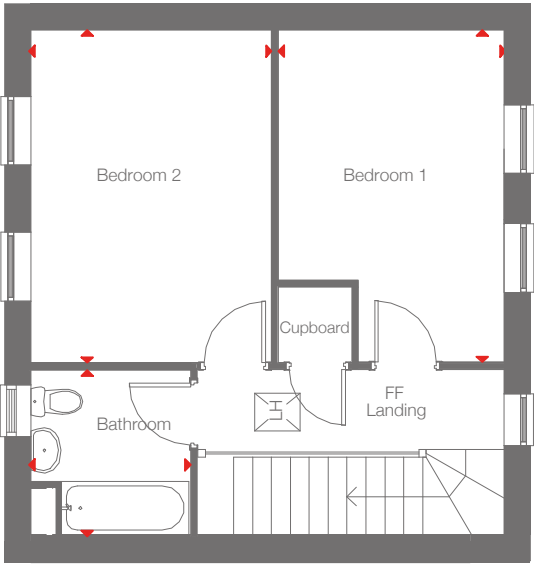


2 bedroom house

Plot 200



Ground floor



First floor

Room schedule		
Living	6.3 x 4m	20'8" x 13'
Kitchen	2.6 x 2.6m	8'5" x 8'7"
Bedroom 1	4.4 x 3.2m	14'5" x 9'10"
Bedroom 2	4.4 x 3.2m	14'5" x 10'6"
Bathroom	2.2 x 2.1m	7'2" x 6'11"
Total area	84 sq m	910 sq ft

Note: Kitchen layouts may vary slightly from layout plan.

Key

DW

Dishwasher

FF

Fridge/freezer

WM

Washing machine

B

Boiler

LH

Loft hatch

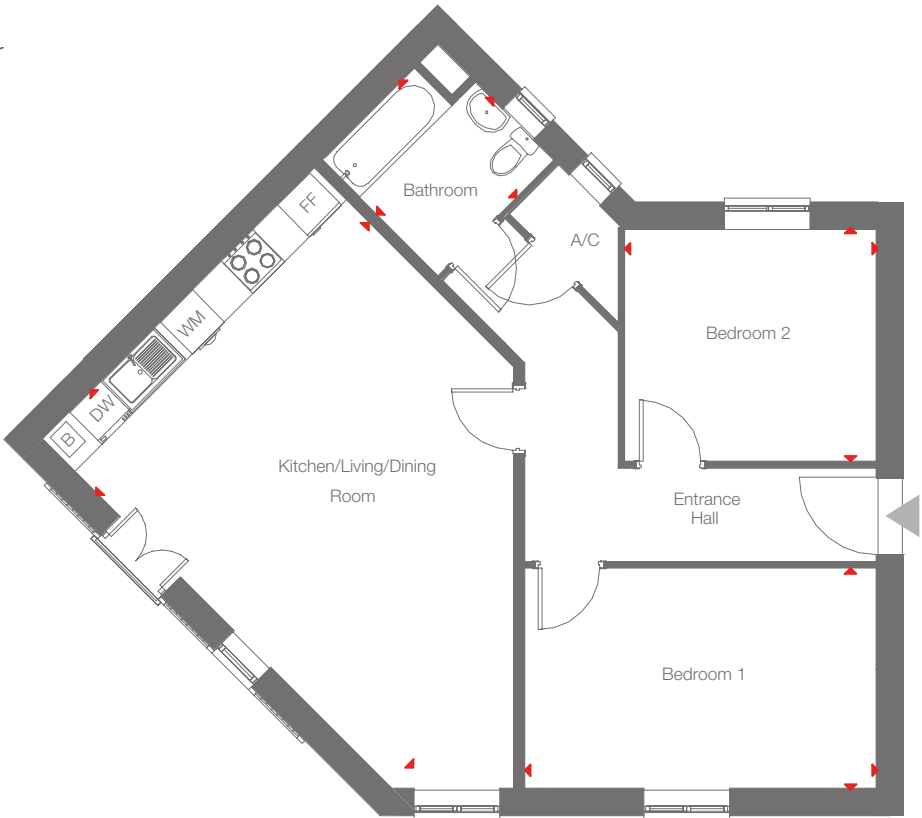
All floor plans in this brochure are for general guidance only. All room dimensions are subject to a plus/minus 5% tolerance. Measures are from plans and "as built", represent the largest cross section of each room and may vary and. Size of balconies vary between apartments of the same type. Any dimensions shown are not intended to be used for carpet sizes, appliances, spaces or items of furniture. These particulars do not constitute any part of an offer or contract with regard to the specifications.



2 bedroom apartment

Plot 223 First Floor

Plot 224 Second floor



Room schedule		
Living / Dining/ Kitchen	6.6 x 5m	21'6" x 16'5"
Bedroom 1	4.7 x 2.9m	15'4" x 9'7"
Bedroom 2	3.3 x 3.1m	12'5" x 9'9"
Bathroom	2.2 x 2.2m	7'2" x 7'2"
Total area	72 sq m	775 sq ft

Note: Kitchen layouts may vary slightly from layout plan.

Key

DW

Dishwasher

FF

Fridge/freezer

WM

Washing machine

B

Boiler

LH

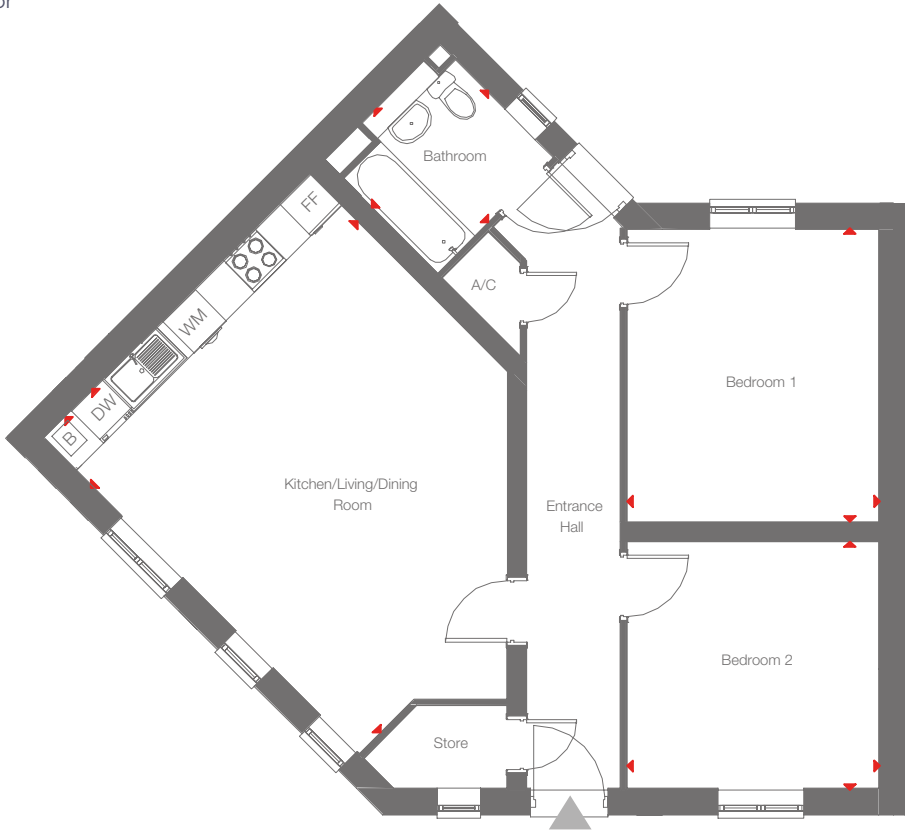
Loft hatch

All floor plans in this brochure are for general guidance only. All room dimensions are subject to a plus/minus 5% tolerance. Measures are from plans and "as built", represent the largest cross section of each room and may vary and. Size of balconies vary between apartments of the same type. Any dimensions shown are not intended to be used for carpet sizes, appliances, spaces or items of furniture. These particulars do not constitute any part of an offer or contract with regard to the specifications.



2 bedroom apartment

Plot 222 Ground Floor



Room schedule

Living / Dining / Kitchen	5.9 x 5m	19'4" x 16'5"
Bedroom 1	3.9 x 3.3m	12'9" x 11'
Bedroom 2	3.3 x 3.3m	11' x 10'9"
Bathroom	2.2 x 2.1m	7'2" x 7'
Total area	72 sq m	775 sq ft

Note: Kitchen layouts may vary slightly from layout plan.

Key

DW

Dishwasher

FF

Fridge/freezer

WM

Washing machine

B

Boiler

LH

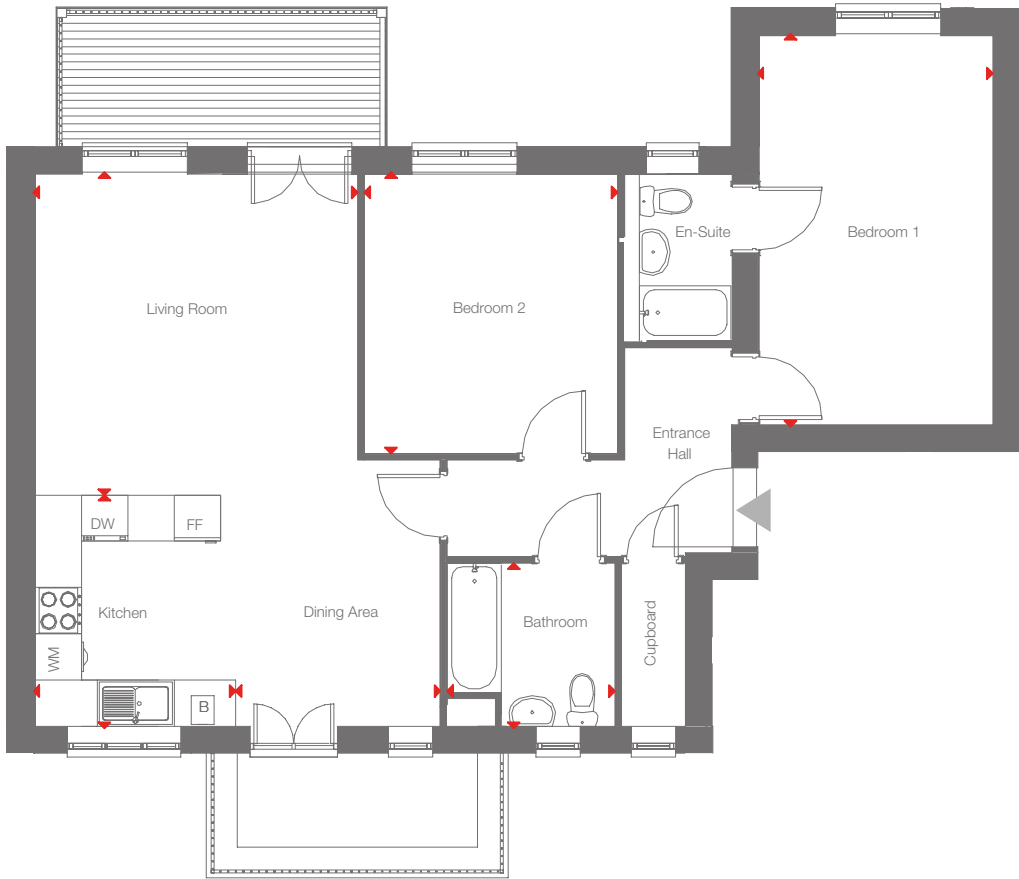
Loft hatch



All floor plans in this brochure are for general guidance only. All room dimensions are subject to a plus/minus 5% tolerance. Measures are from plans and "as built", represent the largest cross section of each room and may vary and. Size of balconies vary between apartments of the same type. Any dimensions shown are not intended to be used for carpet sizes, appliances, spaces or items of furniture. These particulars do not constitute any part of an offer or contract with regard to the specifications.

2 bedroom apartment

Plot 231 First Floor



Room schedule

Living	4.2 x 4.2m	13'9" x 13'9"
Dining	3 x 2.7m	9'11" x 8'8"
Kitchen	3 x 2.6m	9'11" x 8'7"
Bedroom 1	5.1 x 3.1m	16'8" x 10'
Bedroom 2	3.6 x 3.3m	11'11" x 10'9"
Bathroom	2.2 x 2.1m	7'1" x 7'
Total area	79 sq m	850 sq ft

Note: Kitchen layouts may vary slightly from layout plan.

Key

DW

Dishwasher

FF

Fridge/freezer

WM

Washing machine

B

Boiler

LH

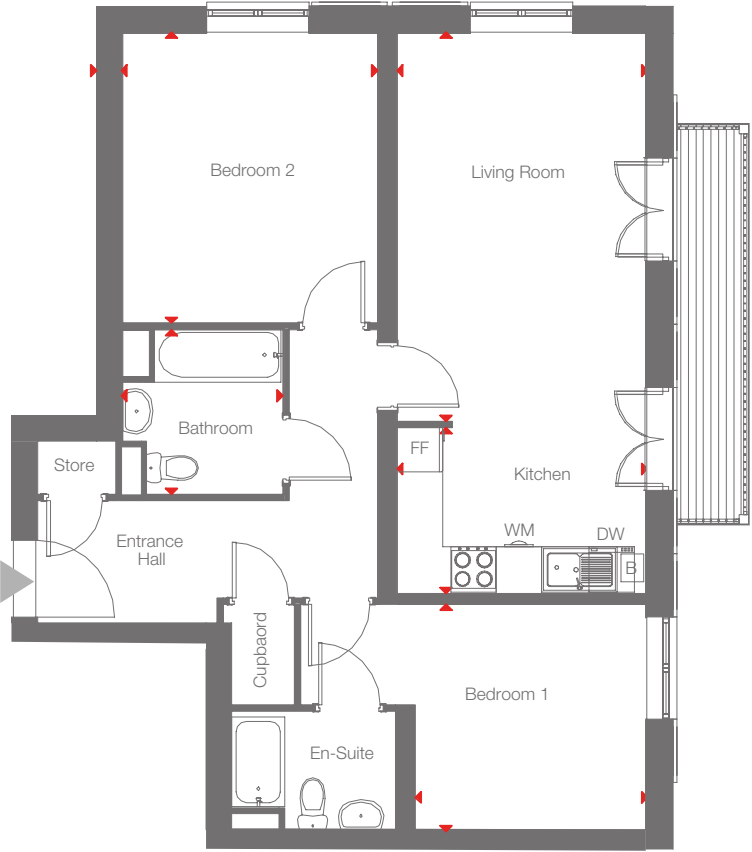
Loft hatch



All floor plans in this brochure are for general guidance only. All room dimensions are subject to a plus/minus 5% tolerance. Measures are from plans and "as built", represent the largest cross section of each room and may vary and. Size of balconies vary between apartments of the same type. Any dimensions shown are not intended to be used for carpet sizes, appliances, spaces or items of furniture. These particulars do not constitute any part of an offer or contract with regard to the specifications.

2 bedroom apartment

Plot 234 First Floor



Room schedule

Living	5.1 x 3.3m	16'10" x 10'10"
Kitchen	3.3 x 2.3m	10'10" x 7'6"
Bedroom 1	4.6 x 3m	15' x 9'10"
Bedroom 2	3.8 x 3.4m	12'5" x 11'1"
Bathroom	2.2 x 2.1m	7'1" x 7'
Total area	71 sq m	764 sq ft

Note: Kitchen layouts may vary slightly from layout plan.

Key

DW

Dishwasher

FF

Fridge/freezer

WM

Washing machine

B

Boiler

LH

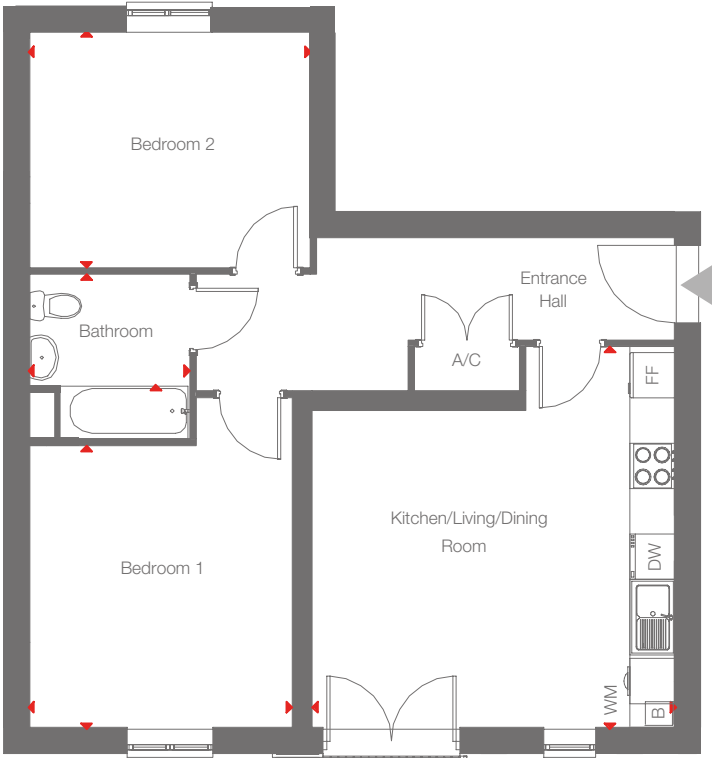
Loft hatch



All floor plans in this brochure are for general guidance only. All room dimensions are subject to a plus/minus 5% tolerance. Measures are from plans and “as built”, represent the largest cross section of each room and may vary and. Size of balconies vary between apartments of the same type. Any dimensions shown are not intended to be used for carpet sizes, appliances, spaces or items of furniture. These particulars do not constitute any part of an offer or contract with regard to the specifications.

2 bedroom apartment

Plot 215 Ground Floor



Room schedule

Living / Dining/ Kitchen	5.1 x 4.8m	16'7" x 15'9"
Bedroom 1	3.7 x 3.5m	12'3" x 11'5"
Bedroom 2	3.7 x 3.1m	12'3" x 10'3"
Bathroom	2.2 x 2.1m	7'1" x 7'
Total area	65 sq m	700 sq ft

Note: Kitchen layouts may vary slightly from layout plan.

Key

DW

Dishwasher

FF

Fridge/freezer

WM

Washing machine

B

Boiler

LH

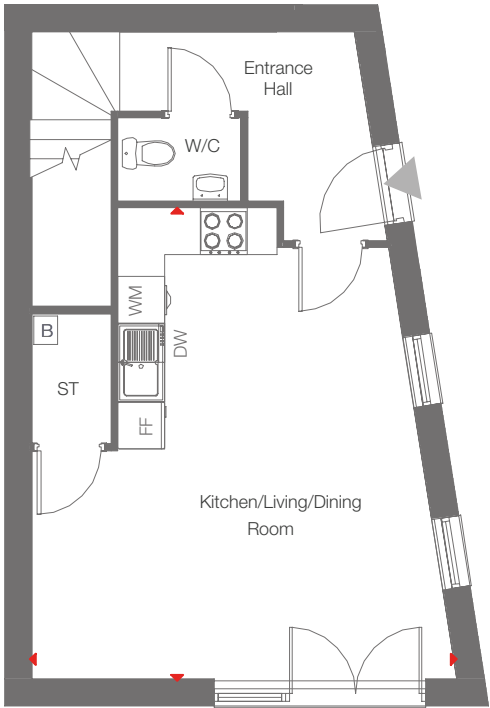
Loft hatch



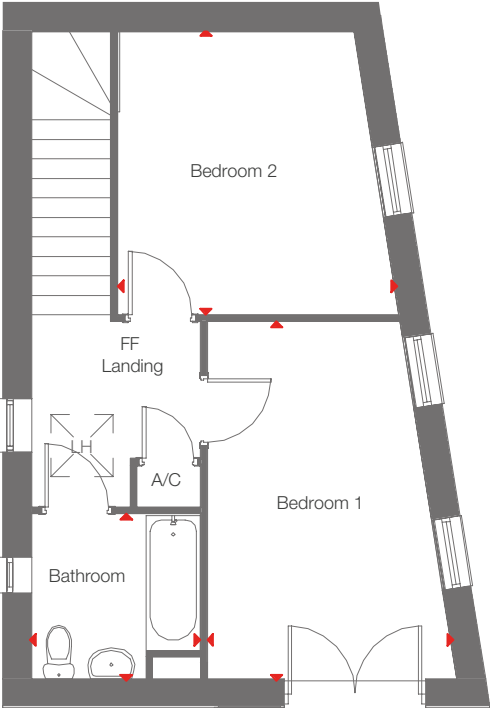
All floor plans in this brochure are for general guidance only. All room dimensions are subject to a plus/minus 5% tolerance. Measures are from plans and “as built”, represent the largest cross section of each room and may vary and. Size of balconies vary between apartments of the same type. Any dimensions shown are not intended to be used for carpet sizes, appliances, spaces or items of furniture. These particulars do not constitute any part of an offer or contract with regard to the specifications.

2 bedroom duplex apartment

Plot 190



Ground floor



First floor

Room schedule		
Living / Dining/ Kitchen	6.1 x 5.5m	19'10" x 18'1"
Bedroom 1	4.6 x 3.2m	15'1" x 10'7"
Bedroom 2	3.6 x 3.6m	11'11" x 11'11"
Bathroom	2.2 x 2.1m	7'1" x 7'
Total area	80 sq m	861 sq ft

Note: Kitchen layouts may vary slightly from layout plan.

Key

DW

Dishwasher

FF

Fridge/freezer

WM

Washing machine

B

Boiler

LH

Loft hatch

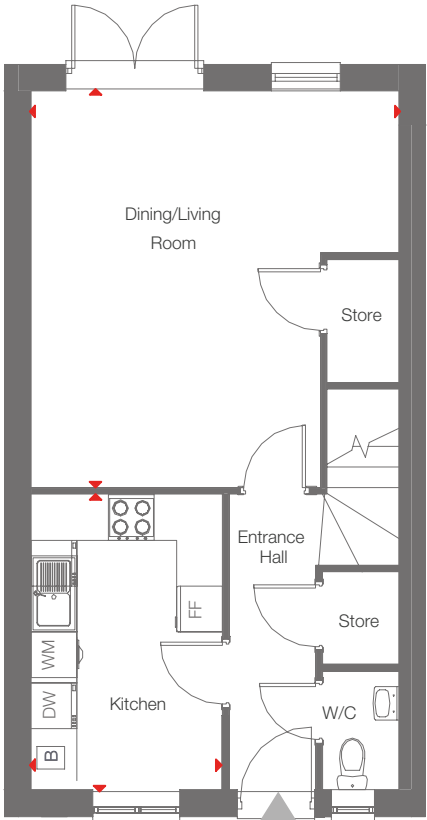
All floor plans in this brochure are for general guidance only. All room dimensions are subject to a plus/minus 5% tolerance. Measures are from plans and "as built", represent the largest cross section of each room and may vary and. Size of balconies vary between apartments of the same type. Any dimensions shown are not intended to be used for carpet sizes, appliances, spaces or items of furniture. These particulars do not constitute any part of an offer or contract with regard to the specifications.



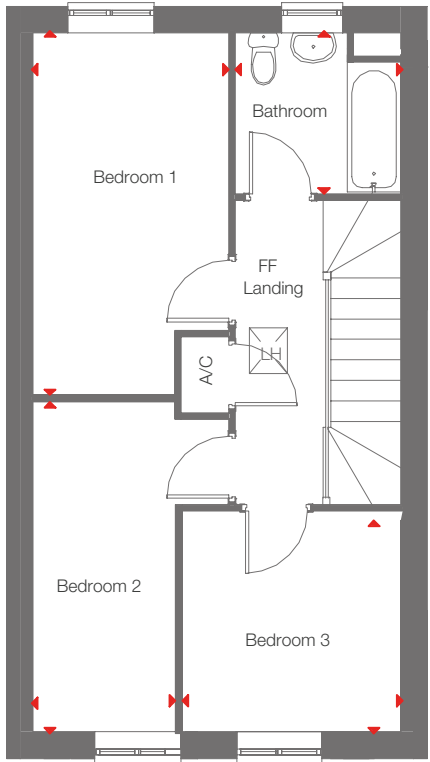
3 bedroom house

Plot 208

Plot 212



Ground floor



First floor

Room schedule		
Living / Dining	5.2 x 4.9m	17'2" x 16'
Kitchen	3.9 x 2.5m	12'10" x 8'3"
Bedroom 1	4.8 x 2.6m	15'8" x 8'6"
Bedroom 2	4.4 x 1.9m	14'4" x 6'2"
Bedroom 3	2.9 x 1.9m	9'6" x 9'2"
Bathroom	2.2 x 2.1m	7'2" x 7'
Total area	90 sq m	968 sq ft

Note: Kitchen layouts may vary slightly from layout plan.

Key

DW

Dishwasher

FF

Fridge/freezer

WM

Washing machine

B

Boiler

LH

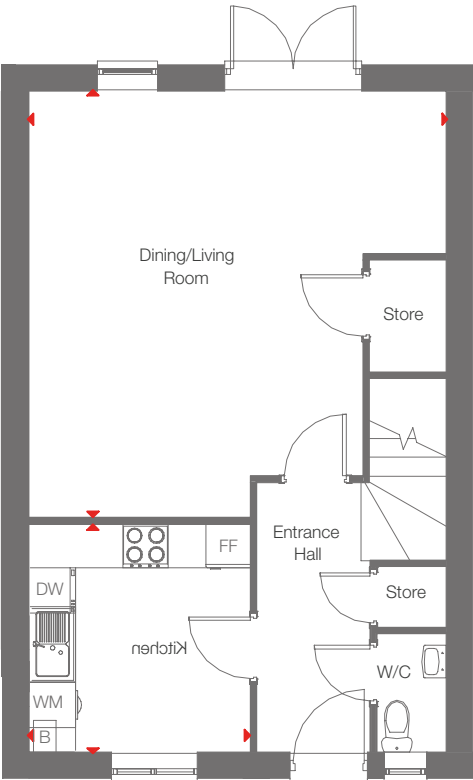
Loft hatch

All floor plans in this brochure are for general guidance only. All room dimensions are subject to a plus/minus 5% tolerance. Measures are from plans and "as built", represent the largest cross section of each room and may vary and. Size of balconies vary between apartments of the same type. Any dimensions shown are not intended to be used for carpet sizes, appliances, spaces or items of furniture. These particulars do not constitute any part of an offer or contract with regard to the specifications.



3 bedroom house

Plot 206



Ground floor

Room schedule

Living / Dining	5.6 x 5.6m	18'7" x 18'3"
Kitchen	3 x 2.9m	9'11" x 9'8"
Bedroom 1	3.3 x 3.1m	10'9" x 10'4"
Bedroom 2	3.3 x 3.3m	11' x 10'9"
Bedroom 3	2.5 x 2.2m	8'1" x 7'2"
Bathroom	2.2 x 2.2m	7'2" x 7'
<b>Total area</b>	<b>98 sq m</b>	<b>1,050 sq ft</b>

Note: Kitchen layouts may vary slightly from layout plan.

Key

- DW

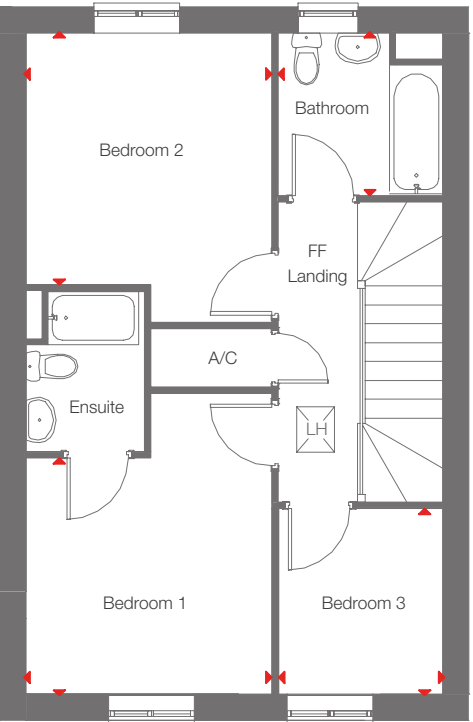
Dishwasher
- FF

Fridge/freezer
- WM

Washing machine
- B

Boiler
- LH

Loft hatch



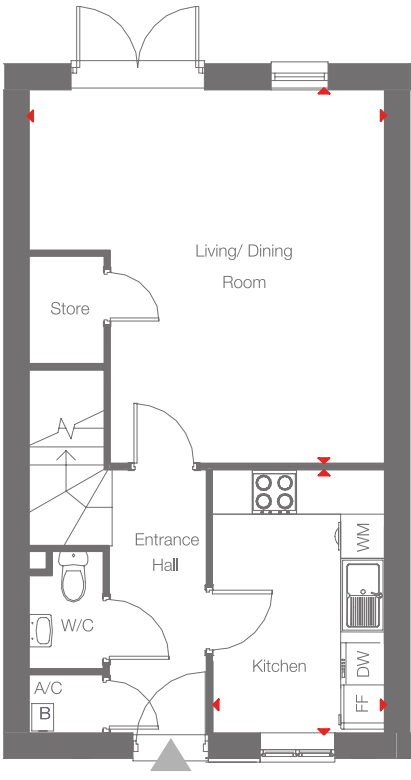
First floor



All floor plans in this brochure are for general guidance only. All room dimensions are subject to a plus/minus 5% tolerance. Measures are from plans and "as built", represent the largest cross section of each room and may vary and. Size of balconies vary between apartments of the same type. Any dimensions shown are not intended to be used for carpet sizes, appliances, spaces or items of furniture. These particulars do not constitute any part of an offer or contract with regard to the specifications.

4 bedroom house

Plot 218



Ground floor

Room schedule

Living / Dining	4.1 x 4.9m	16'9" x 16'
Kitchen	3.6 x 2.4m	11'10" x 7'8"
Bedroom 1	3.8 x 3.7m	12'4" x 12'
Bedroom 2	4.9 x 2.7m	16' x 8'11"
Bedroom 3	3.8 x 2.2m	12'4" x 7'2"
Bedroom 4	2.6 x 2.5m	8'5" x 8'2"
Bathroom	2.7 x 2.1m	7'2" x 7'
<b>Total area</b>	<b>114 sq m</b>	<b>1,227 sq ft</b>

Note: Kitchen layouts may vary slightly from layout plan.

Key

- DW

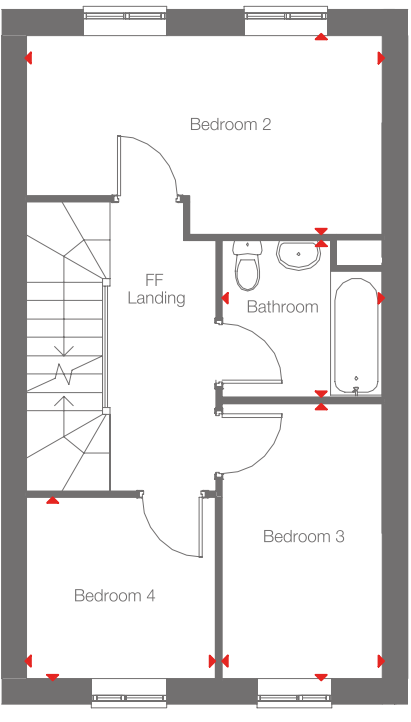
Dishwasher
- FF

Fridge/freezer
- WM

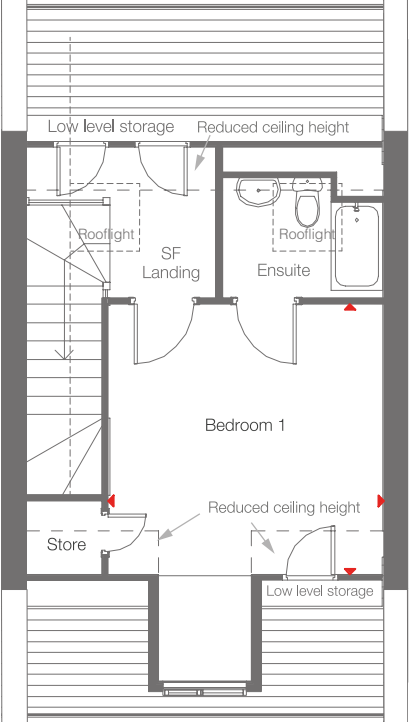
Washing machine
- B

Boiler
- LH

Loft hatch



First floor



Second floor



All floor plans in this brochure are for general guidance only. All room dimensions are subject to a plus/minus 5% tolerance. Measures are from plans and "as built", represent the largest cross section of each room and may vary and. Size of balconies vary between apartments of the same type. Any dimensions shown are not intended to be used for carpet sizes, appliances, spaces or items of furniture. These particulars do not constitute any part of an offer or contract with regard to the specifications.

# <sup>resi</sup> My Upton Square

## **Shared ownership with SO Resi**

### **Start small and build up**

With shared ownership your initial deposit and monthly mortgage payments are smaller than they would be if you bought your home outright. You buy a share that's right for you now, and can buy more over time. As well as your smaller mortgage, there are two other monthly payments – a SO Resi payment for the share of your home that Metropolitan Thames Valley owns, and a service charge that pays to look after the building you live in. There are the usual other expenses, like household utility bills too. We'll help you understand all the costs and work out what's affordable for you. If you decide to move on, you can sell your share at any time.

## **We're here to help at every stage of your move into your new home**

### **Shared ownership enquiries**

Email [sales@soresi.co.uk](mailto:sales@soresi.co.uk) or visit [www.soresi.co.uk](http://www.soresi.co.uk)

Metropolitan Thames Valley has taken all reasonable care in the preparation of the information given in this brochure. However, this information is subject to change and has been prepared solely for the purpose of providing general guidance. Metropolitan Thames Valley does not warrant the accuracy or completeness of this information. Particulars are given for illustrative purposes only. Metropolitan Thames Valley undertakes continuous product development and any information given relating to our products may vary from time to time. The information and particulars set out within this brochure do not constitute part of a formal offer invitation or contract to acquire the relevant property. For the reasons mentioned above, no information contained in this brochure is to be relied upon. In particular, all plans prospectus, descriptions, dimensions and measurements are approximate and provided for guidance only. Such information is given without responsibility on the part of Metropolitan Thames Valley. (January 2022)

**My home, my everything**